



**PPI** IGNITE  
NETWORK

# IMPACT CASE STUDY



## Flying the Irish flag abroad – PPI Ignite Network Lands in San Francisco

### Who was involved?

- **One lead site**
- **Three charities/local partners**
- **Two PPI contributors**
- **One PhD student**
- **Three international Partners**
- **160 international participants**

### Summary

The PPI Ignite Network supported a delegation of Irish partners to attend the 51<sup>st</sup> Annual Meeting of NAPCRG, the largest and oldest international primary care research organization, in San Francisco in November 2023. Seven PPI Ignite members, representing academic and community partners, presented at 6 well-attended interactive workshops and 3 posters about PPI research. NAPCRG members were very excited by the Irish PPI Ignite model for capacity building and change, as well as both tools and research findings developed within the PPI Ignite Network. Our community partners also had an impact on NAPCRG's PaCE Council – its PCORI-funded strategic patient-engagement initiative.

### Our work

PPI Ignite @ UL has always placed a strong focus on participatory health research in primary care and community health. For the past 10 years, UL faculty members, Professor Anne MacFarlane and Associate Professor Jon Salsberg have held leadership roles in the North American Primary Care Research Group (NAPCRG), the world's largest and oldest international primary care research organization, and the first one (in 1998) to have a **policy statement in support of community-based participatory research** in primary care. In 2023, PPI Ignite had a further opportunity to impact primary care research world-wide when it was invited to present our work as well as a number of capacity-building workshops to the broader NAPCRG membership.

Prof MacFarlane, Dr Salsberg, as well as PPI Ignite partners Anna Papyan (Shannon Family Resource Centre), Miriam McCarthy (Health Sciences Academy, UL Hospitals Group, Midwest Community Healthcare & UL), Alphonse Basogomba (UNESCO K4C), PPI Ignite@ UL staff Lorna Kerin & Denia Claudino, PPI Ignite @ UL doctoral student



PPI Ignite Network @ UL members attended NAPCRG meeting in San Francisco

Meghan Gilfoyle, as well as international Partners from the University of Minnesota – led by Prof Michele Allen, presented posters on PPI research, developed 4 workshops that delivered Irish-developed training in important facets of PPI and participatory methods, and participating in delivering 2 further training workshops:

- **Changing the landscape: Building capacity for patient & community involvement: Experiences from the US & Ireland**
- **Combining participatory health research with implementation science for health equity: A tale of two theories**
- **Dissemination Planning with Partners (Rising Stars in Research: Trainee Pre-conference)**
- **Participatory health research with refugees and other migrants – partnerships for health equity**
- **Do you still trust me? Exploring trust in research partnerships over time**
- **Creating and maintaining participatory space to share organizational decision making with patients in family practice**
- **Patient and Clinician Engagement (PaCE) preconference: Characteristics of a “just right” investigator for patient engaged research**

## Our impact

PPI Ignite’s presence at the San Francisco Annual Meeting had a tremendous impact on how primary care researchers, clinicians and patients and community members, approach patient involvement and participatory research.

The 6 workshops were very well attended by more than 160 participants in total from all over the world. We had the opportunity to introduce global primary care researchers to Irish PPI research and capacity building.

### Impact on institutional research culture

Although NAPCRG has long been a leader in promoting participatory approaches, its members have always felt at a loss when returning home to their own institutions to find them unreceptive to participatory or PPI research approaches. “**Changing the Landscape**” presented the PPI Ignite Network’s approach and experiences of initiating institutional culture change and building capacity for PPI. The success of this workshop directly led to the proposal of a pre-conference training day for the 2024 NAPCRG meeting on “**The Nature of Data.**”



## Impact on primary care research partnerships

*Meghan Gilfoyle* presented ‘Do You Still Trust Me?’, her doctoral research into understanding and measuring trust in participatory partnerships. This research was carried out in partnership with the PPI Ignite Network, and revealed new insights into the multidimensionality of trust and how it can be measured and affected to improve health research partnerships.

## Impact on PPI Ignite Partners’ participation in PaCE.

NAPCRG’s [Patient & Clinician Engagement \(PaCE\) Council](#) is a patient-led, PCORI-funded initiative, which ensures strong patient voice in all aspects of primary care research and policy. Our PPI Ignite @ UL partners from Shannon Family Resource Centre and Health Science Academy, as well as our PPI Ignite @ UL staff members and PI Dr Jon Salsberg, helped organized and deliver PaCE’s workshop, ‘The characteristics of a “just right” investigator for patient engaged research’. By participating in these activities, our PPI Ignite members gained new knowledge and experience to bring back to Ireland, as well as had a direct impact on the thinking of US and global PPI contributors.



UL PPI Ignite team and community partners who travelled over to present, along with Professor Michele Allen MD, University of Minnesota

“The Irish PPI team was *the* key presenter on public and patient participatory processes at the NAPCRG. Their presentations were packed and participants walked away from each one with new insights to bring to their organisations and research activities across the globe.”

**Professor Michele Allen MD, University of Minnesota**

# IMPACT CASE STUDY



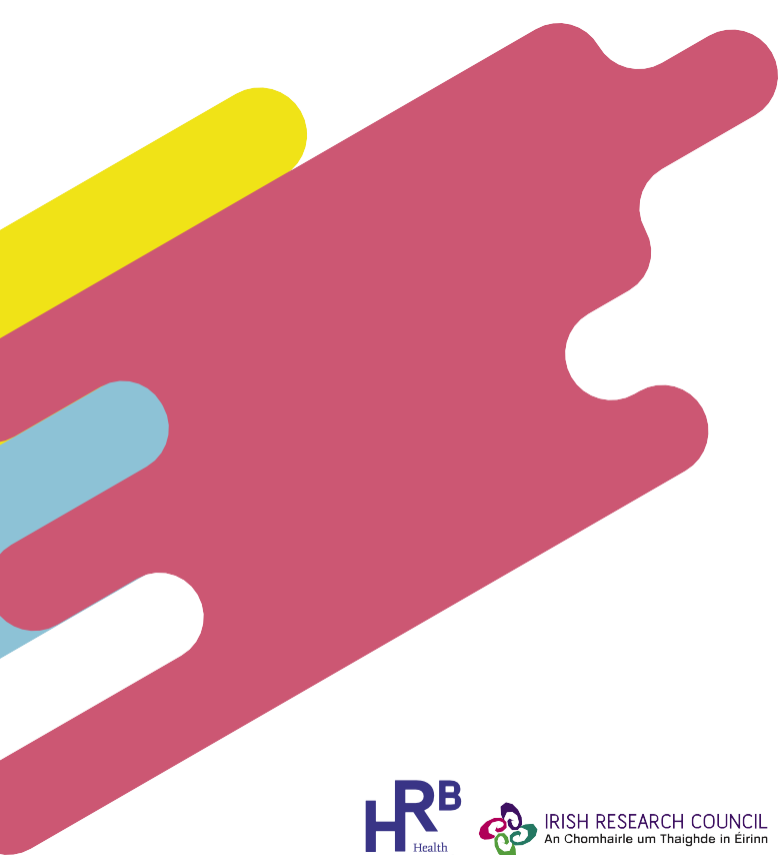
**PPI** IGNITE  
NETWORK

“Participation in such a big, international conference and involvement in a few presentations was a great experience for me. It empowered me and increased my confidence, gave an opportunity to share and learn new ideas, to increase my knowledge about participatory health research and to meet specialists in this area from other countries.”

**Anna Pappan, Shannon Family Resource Centre**

“I felt truly privileged to attend the NAPRG conference in San Francisco, co-facilitating a workshop showcasing the collaboration between UL Hospitals Group and the PPI Ignite Network @ UL team and contributing to knowledge exchange on collaborative working.”

**Miriam McCarthy, Health Sciences Academy Manager, UL Hospitals Group, Midwest Community Healthcare & UL**



IRISH RESEARCH COUNCIL  
An Chomhairle um Thaighde in Éirinn

This work is funded by the Health Research Board and the Irish Research Council, with co-funding from the seven Universities at the centre of the PPI Ignite Network

[www.ppinetwork.ie](http://www.ppinetwork.ie)